



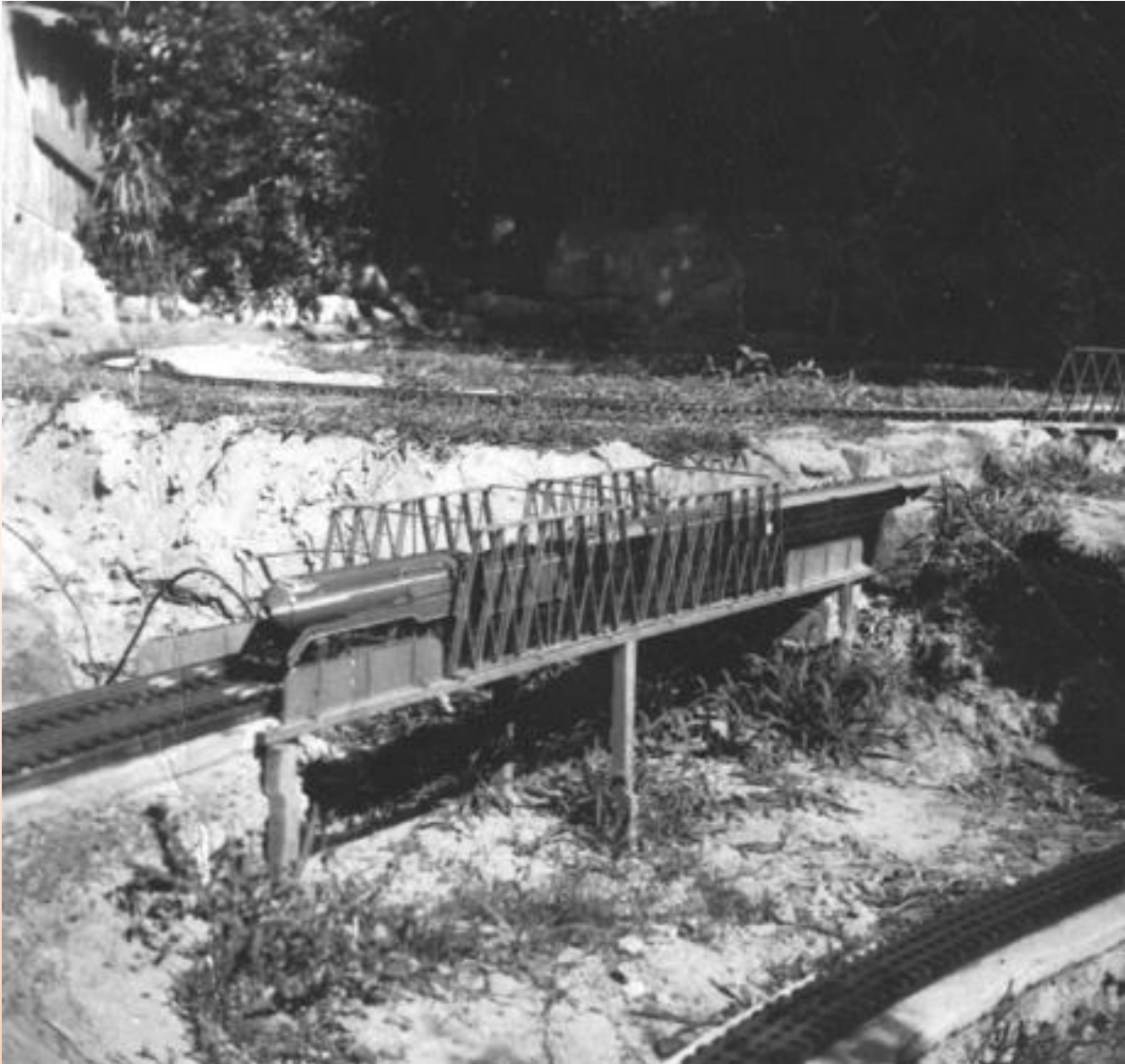
# Card Operation for Your Model Railway



Card operation is a way to  
make your model railway  
more like a prototype railway.



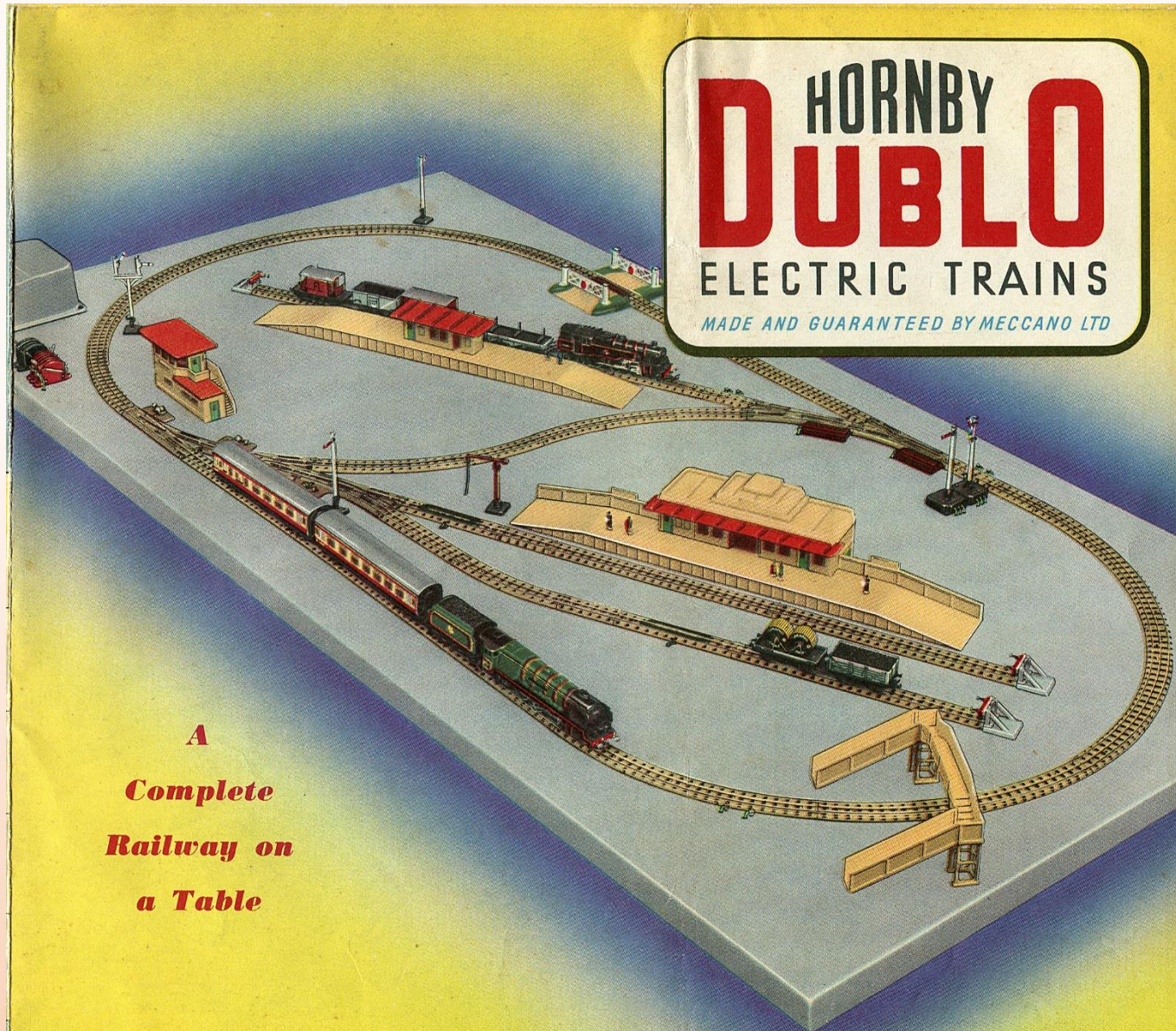












**HORNBY**  
**DUBLO**  
ELECTRIC TRAINS  
*MADE AND GUARANTEED BY MECCANO LTD*

*A  
Complete  
Railway on  
a Table*







## Beyer Peacock's Finest







# The Inglenook Layout

Simple to setup

Easy to use

Suitable for a compact layout













## Yanga 2

Easy to set up.

Easy to operate.

Each card has two train movements

Is reasonably prototypical

Suitable for a compact layout, or a typical  
British fiddle yard to station layout









<b>NSWGR 1</b>	<b>NSWGR 1</b>
<b>CW</b>	<b>S Tarpaulin</b>
<b>LV</b>	<b>SRC</b>
<b>S Wine Barrels</b>	<b>GSV</b>
<b>S</b>	<b>K Timber</b>
<b>MHG</b>	<b>MHG</b>

Each card covers two train movements  
As an example the left hand side is the train departing the staging yard.  
The right hand side details the wagons to be picked up





## The ABLO card system

There is a more detailed set up time.

Each wagon has its own card

Waybill cards are required

Card holders are required at each station

Cards need to be adjusted after each operating session.







Truck / Car No. IA 11045

Load..... Length 1

Truck Type OPEN

Tare.....

Weight of Contents.....

To SHELL DEPOT

Station MARINO

**TURN OVER**

Weight of Contents.....

To JOHN MARTIN & CO

c/- GOODS SHED

Station MILE END,

**SEPARATE**









# Car Card operation without numbers

No individual wagon cards.

System operates with load cards



## The Car Order Card

The Car Order Card has at least the following:

- Industry name and car spot
- The type of car – this may be as detailed as you want as long as the car can be recognized in a location with restricted visibility, like buried in a yard siding.
- Shipping instructions.
- The Car Order Cards are maintained at the yard servicing the particular industry. On large layouts there may be several yards, each with its own Car Order Cards.



## A Typical Car Order Card

**YARD A  
CAR ORDER**

**40' BOX  
TO BE SETOUT AT**

**TOWN B  
FEED MILL**

**WHEN CAR HAS BEEN SETOUT  
PLACE THIS CARD IN BOX  
LABELED**

**DELIVERED**

**YARD A  
PICKUP ORDER**

**40' BOX  
TO BE PICKEDUP AT**

**TOWN B  
FEED MILL**

*For shipment WEST*

**WHEN CAR HAS BEEN RETURNED  
TURN THIS CARD AND PLACE IN**

**CAR ORDERS**











